

# EPSON

PostScript Level 2 Interpreter

# EPSON *StylusRIP*



**User's Guide**  
**for Macintosh**

# EPSON StylusRIP™

All rights reserved. No part of this publication may be reproduced, stored in a retrieval system, or transmitted in any form or by any means, electronic, mechanical, photocopying, recording, or otherwise, without the prior written permission of SEIKO EPSON CORPORATION. The information contained herein is designed only for use with this EPSON printer. EPSON is not responsible for any use of this information as applied to other printers.

Neither SEIKO EPSON CORPORATION nor its affiliates shall be liable to the purchaser of this product or third parties for damages, losses, costs, or expenses incurred by the purchaser or third parties as a result of: accident, misuse, or abuse of this product or unauthorized modifications, repairs, or alterations to this product, or (excluding the U.S.) failure to strictly comply with SEIKO EPSON CORPORATION's operating and maintenance instructions.

SEIKO EPSON CORPORATION shall not be liable for any damages or problems arising from the use of any options or any consumable products other than those designated as Original EPSON Products or EPSON Approved Products by SEIKO EPSON CORPORATION.

Adobe, PageMaker, PostScript, and the PostScript logo are trademarks of Adobe Systems Incorporated which may be registered in certain jurisdictions.

Apple, the Apple logo, LaserWriter, LocalTalk, Performa, and Power Macintosh are trademarks of Apple Computer, Inc.

EPSON is a registered trademark and EPSON Stylus and EPSON StylusRIP are trademarks of SEIKO EPSON CORPORATION.

PANTONE is a registered trademark and PANTONE CALIBRATED is a trade mark of Pantone, Inc.

**General Notice:** *Other product names used herein are for identification purposes only and may be trademarks of their respective owners. EPSON disclaims any and all rights in those marks.*

Copyright © 1996 by SEIKO EPSON CORPORATION, Nagano, Japan.



Printed on Recycled Paper.

## User's Guide

---



---

# Contents

## *Introduction*

---

Features . . . . .	1
Network Environment . . . . .	2

## *Chapter 1 Installing the StylusRIP Software*

---

System Requirements . . . . .	1-1
Setting up StylusRIP for a standalone environment . . . . .	1-3
What to Check Before Setting Up StylusRIP . . . . .	1-4
Standard Installation . . . . .	1-5
Custom Installation . . . . .	1-7
Color Matching . . . . .	1-8
PANTONE Color Support . . . . .	1-8
ColorSync 2.0 Support . . . . .	1-8

## *Chapter 2 Installing StylusRIP in Your Printer*

---

## *Chapter 3 Printing With StylusRIP (Server)*

---

Using the StylusRIP Server . . . . .	3-1
Exiting the StylusRIP Server . . . . .	3-2
Checking Print Status . . . . .	3-3
Using the Preferences Dialog Box . . . . .	3-4
Selecting and Setting up the StylusRIP Server . . . . .	3-6
Starting the StylusRIP Server automatically . . . . .	3-9
Using the Print Options Window . . . . .	3-10
Printing From Your Macintosh to the StylusRIP Server . . . . .	3-10
Cancelling a Print Job . . . . .	3-11

## Chapter 4 *Troubleshooting*

---

Troubleshooting Hints . . . . .	4-1
An Out of Memory, Memory Low, or VM error message appears . . . . .	4-1
Font not found: using Courier; Find font errors . . . . .	4-2
Images on printed pages are clipped . . . . .	4-2
Printer out of synch - outputting repeated pages of extraneous code . . . . .	4-3
Printer cannot be opened or printer not found . . . . .	4-3
Job in pre-print queue not printed . . . . .	4-3
Job prints in black and white or one or more colors are missing . . . . .	4-4
Client times out while sending job to StylusRIP . . . . .	4-4

## *Glossary*

---

## *Index*

---

---

# Introduction

EPSON® StylusRIP is software that turns your EPSON Stylus™ printer into a PostScript® printer. StylusRIP processes raster images for your Apple® Macintosh®, reads and interprets Adobe Level 2 PostScript, and allows your EPSON Stylus printer to print color raster images.

Adobe PostScript is the standard for high quality graphic output. All elements of a document, including text, graphics, and images are processed, stored, and reproduced using the PostScript code. When you print from an application, such as PageMaker®, StylusRIP processes the PostScript code and sends the processed image to the printer.

---

## Features

EPSON StylusRIP includes the following features:

- Enables PostScript printing**  
StylusRIP is software that enables an EPSON Stylus COLOR printer connected to Macintosh to perform as a PostScript printer.
- Power Macintosh compatibility**  
StylusRIP is designed for the Power Macintosh or Power PC owner.
- Print server capability**  
StylusRIP is available for use in either a standalone or network environment. If you set up your EPSON Stylus printer as a print server, you can print from other Macintosh computers on the network to the print server on a host Macintosh. Your print data will then be sent to the printer in the order it was received.

- ❑ Easy to operate in a network or standalone environment  
StylusRIP is as easy to use over a network as it is to use in a standalone (one Macintosh and one printer) environment. Once you decide how you want to use StylusRIP and set it up, you never have to think about its environment again.
- ❑ Equipped with Adobe Brilliant Screen  
StylusRIP comes with the Adobe Brilliant Screen (ABS) software, which until now was only found on high-end PostScript printers. ABS improves print quality, especially when using a halftoning pattern to print photo-quality images.

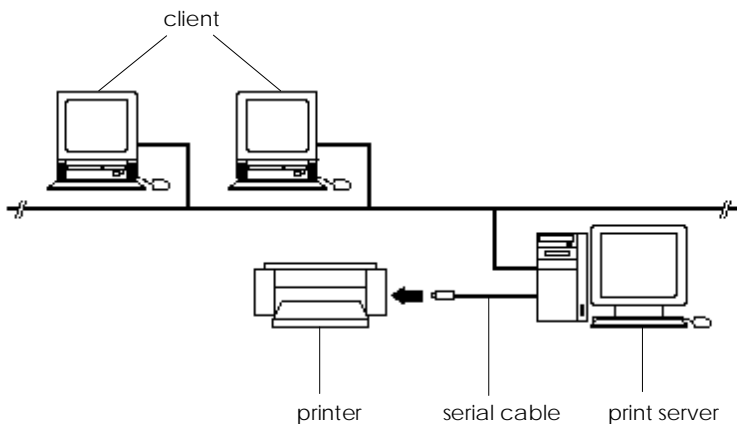
---

## *Network Environment*

StylusRIP can be used on any AppleTalk, EtherTalk, or LocalTalk network with two or more Macintosh computers.

There are two ways to use StylusRIP as a print server on a network, as shown by the following illustrations. Choose the environment that best suits your needs.

In the illustration below, the Macintosh that is directly connected to the printer and contains the StylusRIP software is called the “print server.” The other Macintosh computers are called clients. The print server in this case is a Macintosh that has the power to receive and send a lot of data very quickly.



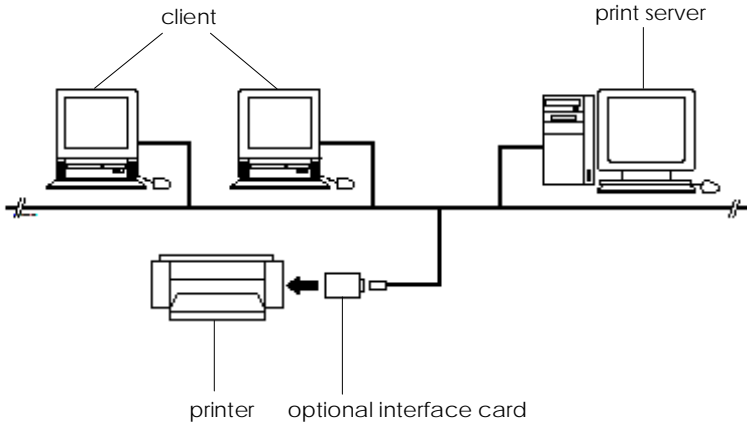
**Note:**

- ❑ *The most efficient way to use StylusRIP as a print server is to install the software on a Power Macintosh that has strong data management capabilities and devote it to the management of the print data that is sent over the network. In this way, you can print even faster than if your printer and StylusRIP enabled Macintosh were connected directly in a standalone environment.*
- ❑ *If you use a LocalTalk network environment, be sure to use a serial cable to connect the printer with the modem port of the print server. Although you can connect the printer directly to the LocalTalk network, the data transmission speed will decrease.*

When printing from a client Macintosh, the print job is first sent to the print sever. Then the Print Server puts that print job in a print queue and sends the print job to the printer in the order received.

EPSON recommends you to connect the printer and print server, by serial cable, as shown above.





In a general network environment, the printer is shared by multiple Macintosh computers over the network. For this situation, you may have to install an optional interface card in the printer, set it up for use on a LocalTalk or EtherTalk network, and set up the card or another device as the print server. The illustration above shows an example of a general network environment.

In the above network environment, you need to install StylusRIP on all PostScript enabled Macintosh computers. One more factor to consider when choosing what network architecture you want to use is the amount of traffic generated on the network. In the first diagram, print data is only sent once over the network, while in the second diagram it will be sent twice; once to the print server and once to the printer. You may notice delays on the network if detailed image data is sent often.

Before you install the StylusRIP software in your Macintosh, make sure your Macintosh meets the system requirements listed below.

---

### ***System Requirements***

Your Macintosh needs to meet the following configuration requirements to use StylusRIP, whether in a standalone or network environment:

- ❑ Centris, Quadra, Power Macintosh, or Performa series, depending on how you use the StylusRIP software.
- ❑ At least 8 MB of RAM. 12 MB of RAM is recommended. Also, any memory requirements for optional software must be added to this total.
- ❑ At least 8 MB of available disk space. As the number of files in the jobs folder increases, the amount of required disk space also increases.
- ❑ Macintosh Operating System version 7.5 or later
- ❑ CPU: PowerPC, 68040
- ❑ CD-ROM drive is required.

**Note:**

- ❑ *Performa series Macintosh computers that have built-in CD-ROM drives cannot be used as a print server.*
- ❑ *If you do not use the printer or printer's interface card as the print server, EPSON recommends you directly connect the printer and host computer by serial interface. Use of the serial interface connection decreases the amount of traffic on your network.*
- ❑ *For details about the network environment, refer to "Network Environment" on page 2.*

A StylusRIP client requires the following minimum configuration:

- ❑ Centris, Quadra, PowerBook, Power Macintosh, or Performa series Macintosh.
- ❑ Macintosh Operating System version 7.5 or later
- ❑ AppleTalk network connection with the StylusRIP Server
- ❑ 8MB of RAM to install the StylusRIP client software

## *Setting up StylusRIP for a standalone environment*

To print PostScript documents in a standalone environment, you need to set AppleTalk to Active in Chooser and connect the printer to the modem port (the printer port is not suitable for StylusRIP). However, if you cannot use the modem port, follow the steps below:

1. Insert the StylusRIP CD-ROM into the CD-ROM drive.
2. From the CD-ROM, copy the Remote Only file to the Extensions folder in the System folder.
3. Open the Control Panels on the Apple menu.
4. Click the Network icon and select Remote Only. If your system uses the Open Transport protocol (there is no Network icon), open the AppleTalk folder and select Remote Only in the Connect via list box.
5. Restart your Macintosh.
6. Select Active for the AppleTalk setting in the Chooser. You can now print PostScript documents with the printer connected to the printer port.

---

## *What to Check Before Setting Up StylusRIP*

Before setting up StylusRIP, make sure your system meets the minimum hardware and software requirements listed above, and install any necessary fonts and printer drivers in your Macintosh. See your font installation software and printer user's guides for more details.

### **Note:**

*Read the "README" file provided on the StylusRIP floppy disk before setting up StylusRIP. The README file contains some important notices and the latest information concerning StylusRIP.*

Also, be sure to note the following when setting up StylusRIP:

- Make sure that the original Disk 1 is not write protected; the tab in the upper-left corner on the back of the floppy disk must be closed. You cannot use a copied disk or disk that is write protected.
- Turn off all virus protection. For instructions on how to do this, see your virus protection or Macintosh documentation.
- Close all other active applications.
- Carefully choose which printer to install the software in; you can only install the software in one printer.
- Be sure to print a self test for the printer in question to make sure the printer is operating properly. Also, make sure the printer and Macintosh are connected correctly.
- Determine what kind of installation you need, standard or custom. To install StylusRIP on a standalone or print server Macintosh, follow the standard installation instructions below. To install StylusRIP on a client Macintosh or if you don't want to print from your print server, follow the custom installation instructions starting on page 1-6.

## Standard Installation

Follow these steps:

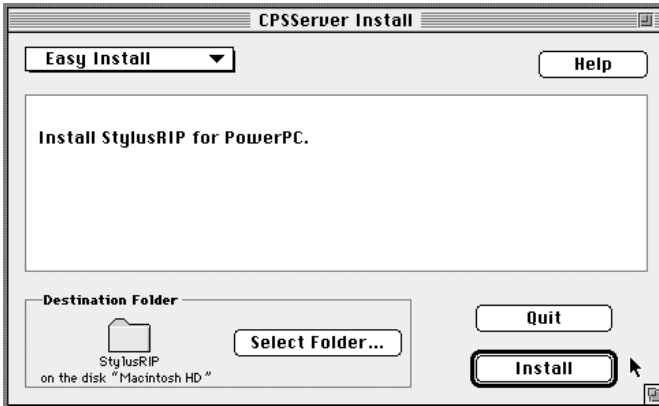
1. Turn off all virus protection programs before you install the software. To do this, see your virus protection or Macintosh documentation.
2. Insert the diskette (Disk 1) and the CD-ROM into the appropriate drives. The following icons appear on your screen.



3. Double-click the Installer icon. The following screen appears:



- Click Continue. The following dialog box appears:

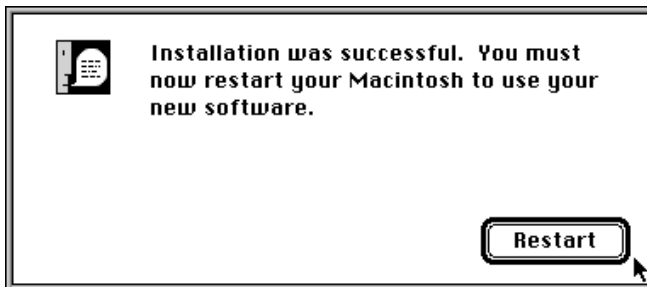


- Click Install for the default installation.

**Note:**

*The installer saves the StylusRIP files to your hard disk. If you want to install the files somewhere other than your hard disk, click the Select Folder button and choose the destination.*

The program installs all files necessary to run StylusRIP. When installation is complete, the following dialog box appears:



- Click Restart to complete the StylusRIP software installation.

---

## *Custom Installation*

For a StylusRIP client (a typical workstation connected to the network) or minimum StylusRIP print server installation, follow the steps below. The minimum StylusRIP print server setup only includes print server software, which means you will not be able to print PostScript documents directly from the host machine that contains your print server.

1. Turn off all virus protection programs before you install the software. To do this, see your virus protection or Macintosh documentation.
2. Insert the diskette (Disk 1) and the CD-ROM into the appropriate drives.
3. Open the Client Installer folder, then double-click the Installer icon.
4. Follow the on-screen instructions.
5. Click Restart to complete the StylusRIP software installation.



---

## *Color Matching*

During the StylusRIP installation, Pantone color profiles for EPSON Stylus printers and the ColorSync 2.0 color matching system are installed in the StylusRIP Utilities folder.

### *PANTONE Color Support*

PANTONE professional color palette files for the EPSON Stylus series printer are included with StylusRIP. These files can be read directly into all PANTONE-licensed applications so you can have printer calibrated versions of all Pantone colors. The colors are calibrated to use StylusRIP's stochastic screens and EPSON's coated and high-quality glossy paper.

For installation instructions, refer to the README file, Pantone documentation, and Pantone manual in the Pantone folder.

### *ColorSync 2.0 Support*

For applications that support ColorSync 2.0, use the ICC (International Color Consortium) profiles that are included in the StylusRIP software.

For installation instructions, refer to the README file in the ColorSync profile folder.

# Installing StylusRIP in Your Printer

This chapter describes how to upgrade your printer to a StylusRIP (PostScript enabled) printer. You need to install the StylusRIP software in your Macintosh first, as described in Chapter 1, before you can upgrade your printer. Follow the steps below to install the software in your printer.

**Note:**

*After installing StylusRIP in the printer, you need to launch StylusRIP from your Macintosh to enable the software.*

1. Print a self test from your printer. For details on how to print a self test, see your printer manual.

**Note:**

*You can only install the StylusRIP software one time and only on one printer. Check the self test to make sure the printer is operating normally before installing the software.*

2. Make sure the Macintosh and printer are properly connected. The printer should be connected to the Macintosh's serial (modem or printer) port for a standalone Macintosh or directly connected print server Macintosh, or the printer should be connected to the network via an optional interface.
3. Turn off your Macintosh (if necessary) and turn off the printer.
4. Turn on your Macintosh, then turn on the printer.

**Note:**

*Make sure the printer's Power light (or Operate light depending on the printer) is on.*

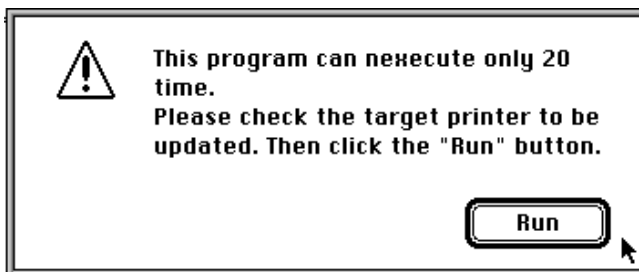
5. Insert Disk 1 into the Macintosh's disk drive.

**Note:**

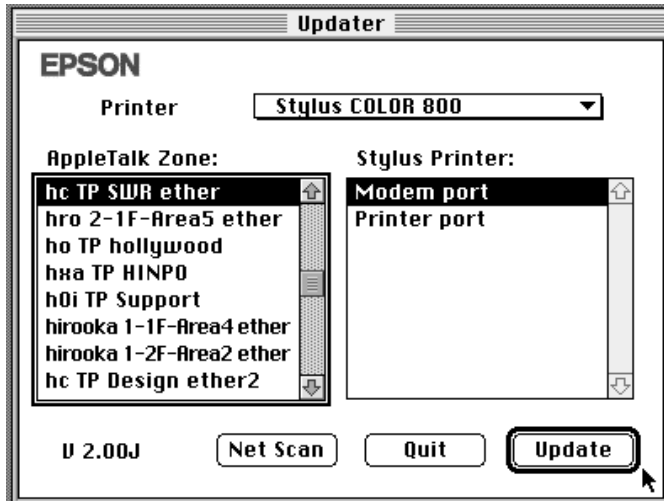
*Be sure to use the original floppy disk with no write protection when installing the software. If you receive a write-protect error, eject the floppy disk and push down the tab in the upper-left corner on the back of the floppy, then reinsert the disk into the disk drive.*



6. Double-click the Updater icon.



- After verifying that the target printer is connected to your Macintosh or the network, click the Install button. The following dialog box appears:



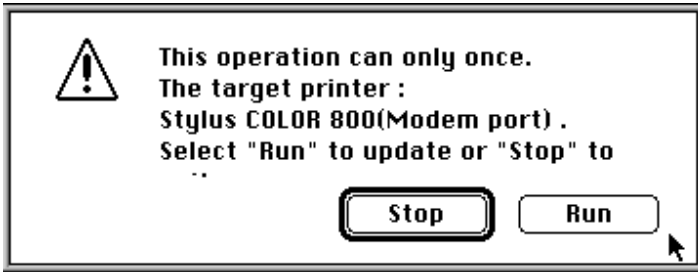
- If you connect the printer to your Macintosh via the serial cable, select the printer name and then select the port you use; modem or printer.

If you connect the printer to the network, select the AppleTalk zone where the printer is located and then select the printer name.

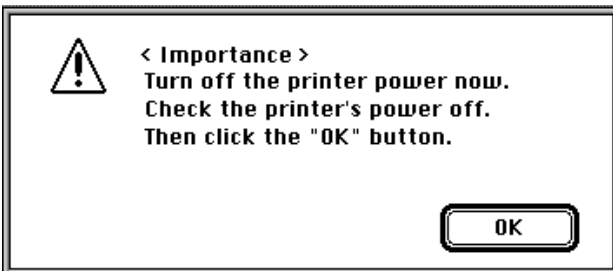
**Note:**

*You can only install the StylusRIP software one time and only on one printer. Be sure to select the correct printer. If you do not see your printer in the list, click the Net Scan button to search the network for it.*

5. Click the Install button. The following dialog box appears:



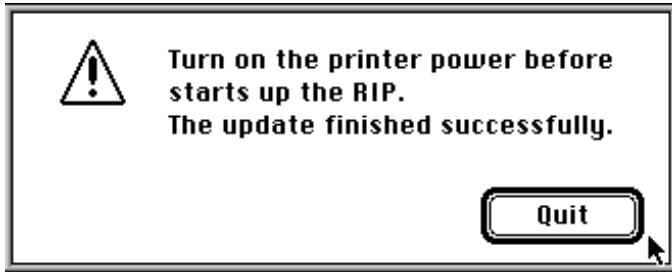
6. Make sure the correct printer name is shown in the dialog box, and then click Install.
7. When the following dialog box appears, turn off the printer:



**Note:**

*The printer must initialize, or start up, with the StylusRIP software installed; otherwise StylusRIP may not operate properly. Always use the printer's power switch to turn it off and on. If you turn it off or on any other way, such as by removing the power cable, StylusRIP may not work properly.*

8. Click OK after confirming the printer's Power light is off.



9. Click Quit. The StylusRIP software installation is now finished.
10. Stick the enclosed PostScript logo seal where it is easy to see in your printer. This seal is important if the printer ever needs repairs.
11. Turn on the printer and launch StylusRIP from your Macintosh to enable the software and use it.



**Caution:**

*When setting up StylusRIP, several files and folders are installed on your hard drive. Do not move, modify, or delete these files or folders. Otherwise, StylusRIP may not work correctly.*



# Printing With StylusRIP (Server)

The StylusRIP Server is software that can play the role of print server. When you send a print job from your application program, the StylusRIP Server receives that print job and puts it in a print queue in the order it was received. When your print job reaches the top of the queue, the StylusRIP Server sends it to the printer to be printed. The StylusRIP Server, just like any other application, must be opened before you can use it.

---

### Using the StylusRIP Server

The first time you open the StylusRIP Server after setting up the StylusRIP software package, be sure to select the printer that you just updated.

1. Turn on the printer. Make sure the printer's Power light (or Operate light depending on the printer) is on before you open the StylusRIP Server.
2. Double-click the hard drive icon, and double-click the StylusRIP Server icon in the StylusRIP folder.

**Note:**

*Make sure AppleTalk is active in the Chooser. If it is not, StylusRIP is not available.*

3. Select the port or printer name. Select the port (printer or modem) if you connect the printer by serial cable. Select the printer name if you connect the printer to the AppleTalk network via a LocalTalk or EtherTalk interface.

**Note:**

*If you have multiple AppleTalk zones, select the zone where the printer is located and then select the printer name.*



4. Click OK. The StylusRIP Server searches for the upgraded printer. If the printer's power is on and the printer is ready to print, the StylusRIP Server selects the printer and prepares for printing.

### *Using the Printer Connection dialog box*

The first time you activate the StylusRIP Server after installation (or if there is no response from the printer), choose Printer Connection on the PostScript menu of the StylusRIP Server to open the Printer Connection dialog box.

Select your StylusRIP printer in the dialog box. After making sure the printer is turned on and ready to print, choose the port that the printer is connected to and click OK. If you print over an AppleTalk network, select the printer name after selecting the AppleTalk zone.

**Note:**

*If you do not use the printer or printer's interface card as the print server, EPSON recommends you use a serial cable to directly connect the printer and host computer. Use of the serial interface connection decreases the amount of traffic on your network. For details, refer to "Network Environment" on page 2.*

---

### *Exiting the StylusRIP Server*

Close the StylusRIP Server by choosing Exit on the File menu of the StylusRIP Server. Keep in mind, you need to open StylusRIP every time before printing.

**Note:**

*Unless your Macintosh is low on memory, you do not need to exit StylusRIP after every print job. You can leave it active until you turn off your Macintosh.*

---

## Checking Print Status

If the StylusRIP Server is activated, the Server Status window automatically appears and shows the print status when you send a print job. This window displays the following information:

**Connection:**

Displays the name of the application program used to create the PostScript file.

**Printer:**

Displays the raster output printer name that is selected in the StylusRIP Server.

**Page:**

Displays the number of the page that is being ripped and the total number of pages.

**Quality:**

Displays the print resolution and print direction.

**Data Size:**

Displays the size of the PostScript file that is being ripped. The value increases as more of the file is received and ripped. Once the entire file has been received and ripped, the raster output is sent to the printer, as shown by the “Progress” bar.

**Status:**

Displays the current status of StylusRIP.

**Message:**

Displays specific printer information such as “Paper out” or “Ink end.” All recoverable printer errors are displayed here. When an error occurs, StylusRIP holds the print job until the error is fixed and then automatically releases the job for printing. PostScript error messages are also shown here.

**Progress:**

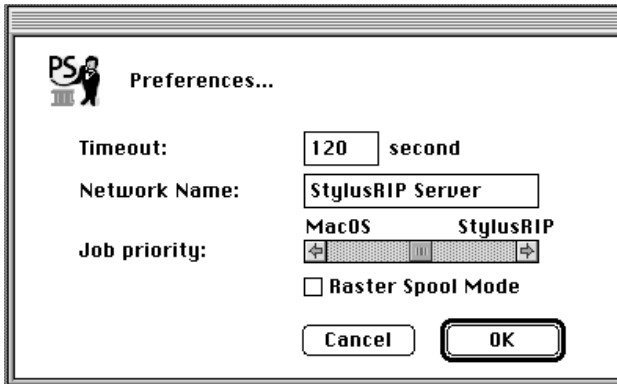
Displays the progress of the raster output that is sent to the printer using a status bar. The color of this bar changes to gray when data is first sent to the printer. Printing begins soon after this. The bar progresses from left to right and reaches the right edge when the print job has been completely sent.

To hide the Server Status window, choose Hide Window on the PostScript menu. To display the window again, choose Show Window.

---

## *Using the Preferences Dialog Box*

You can make special preference settings by choosing Preferences on the File menu. The Preferences settings are for network environments only.

**Timeout:**

The StylusRIP Server disconnects from a client Macintosh if the StylusRIP gets no response from the client for the specified amount of time. The default timeout setting is 120 seconds.

To make the Timeout setting, click in the Timeout box and type in a new value.

**Network Name:**

This is the same StylusRIP Server name that you select in the Chooser. The default name is StylusRIP Server.

To change the name of the network, click in the Network Name box and type a new, unique name.

**Job Priority:**

This setting controls whether priority is given to your application or the StylusRIP Server. The default setting is in the center, giving equal priority to both pieces of software.

To improve the StylusRIP Server's performance, move the slide bar to the right. To improve your application's performance, move the slide bar to the left.

**Note:**

*The Timeout, Network Name, and Job Priority settings will go into effect soon after you click the OK button.*

**Raster Spool Mode:**

This setting turns on or off raster image spooling. The default setting is off. It is on when a check appears in the check box. Click the check box to turn it on or off.

Turning on raster image spooling is recommended to get the following benefits:

**(1) Faster ripping of multiple copies**

When 2 or more copies of one PostScript print job are sent to the printer, StylusRIP only rips the job once. This saves time and frees up hardware resources.

**(2) Faster ripping**

When this setting is on, StylusRIP spools raster images to the hard drive faster than it can output the print data to the printer. Because of this, StylusRIP is ready to receive the next print job much quicker.

The drawback with spooling raster images is that spooling requires a lot of free space on your hard disk. The amount of free disk space that your print job requires depends on the size of, resolution of, and amount of detail in the print job. If you do not have enough space on your hard drive, StylusRIP stops spooling when the hard disk becomes full and restarts spooling as soon as the previous print job is finished. This can cause slower performance than if Raster Spool Mode is turned off.

**Note:**

*If you turn on or off Raster Spool Mode, you must quit and restart StylusRIP before the new setting takes effect.*

---

## **Selecting and Setting up the StylusRIP Server**

You need to select and set up the StylusRIP Server before printing, as described in this section.

**Note:**

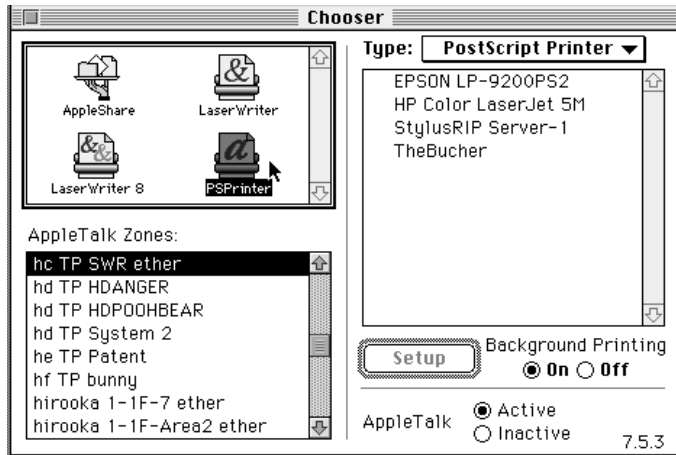
*If you consistently use the StylusRIP Server, see “Starting the StylusRIP Server automatically” on page 3-9.*

1. Double-click the StylusRIP Server icon in the StylusRIP folder.

**Note:**

- Although you need to activate the StylusRIP Server before printing, you only need not to select a printer (printer driver) if you switch to a different printer.*
- If you cannot proceed with the steps below, either the StylusRIP Server is not activated or an interface cable is not connected. Make sure the StylusRIP Server is activated and all interface cables are properly connected.*

- Open the Chooser; then click the PSPrinter icon in the left column.

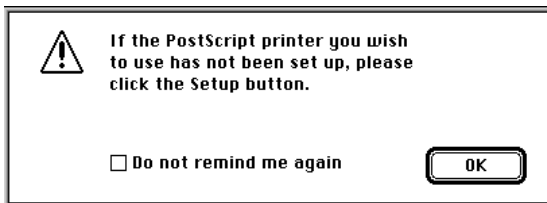


**Note:**

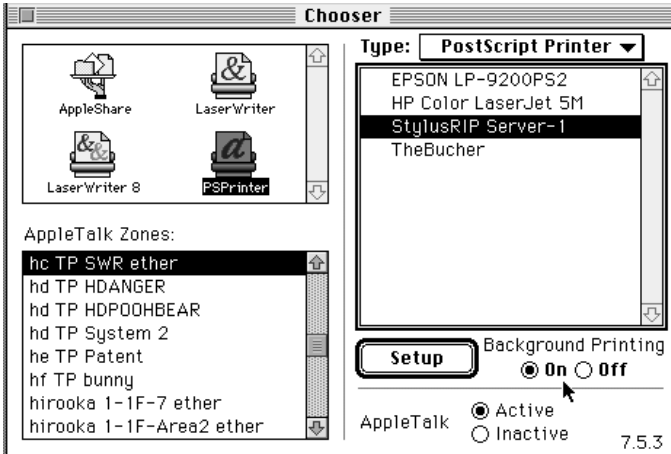
- If you print over an AppleTalk network, select the printer name after selecting the zone where the printer is connected.
  - You can change the server name. Choose Preferences in the File menu of the StylusRIP Server, then input the name you want to name.
- Select the StylusRIP Server (keep in mind that the name may have been changed) in the right column.

**Note:**

The following dialog box appears the first time you select the StylusRIP Server. Click the check box if you don't want the warning message to appear again.



4. Click OK. The warning message box closes.
5. Select the On radio button under Background Printing.



**Note:**

*If the Off radio button is selected, control of your application does not return to you until the entire print job has been sent to the printer or print server. Also, some applications can only print with Background Printing turned on.*

6. Click the Active radio button to make the AppleTalk setting.

**Note:**

*You need to click the AppleTalk Active radio button whether the printer is connected to the network or not.*

7. Click Setup. The correct PPD file is automatically selected.

**Note:**

*The PPD file is automatically installed in the Printer Description file of the Extensions folder in the System Folder.*

8. Close the Chooser by clicking the close box at the top left corner.

**Note:**

*Some applications display a proprietary dialog box at this point. If one appears, see your application manual for instructions.*

### ***Starting the StylusRIP Server automatically***

Follow the steps below if you often use the StylusRIP Server. This procedure causes the StylusRIP Server to start automatically every time you turn on your Macintosh.

1. Double-click the EPSON StylusRIP folder in the hard drive.
2. Choose StylusRIP Server icon.
3. On the File menu, choose Make Alias to make the StylusRIP Server alias icon.
4. Move the alias into the Startup Items folder in the System Folder.



---

## *Using the Print Options Window*

You can make the following Print Options settings in the Print window. To open this dialog box, press the “ ” and “P” keys on the keyboard simultaneously, and then click Options in the dialog box that appears.

**Quality:**

Select the Media Type and Resolution combinations.

**Ink:**

Select color or black ink only.

**Screen:**

Select the halftone screen setting. The options are Brilliant Screen Always and Application Default. Brilliant Screen Always uses the Adobe Brilliant Screen halftoning method. Application Default uses the halftoning method designated in your application.

---

## *Printing From Your Macintosh to the StylusRIP Server*

Follow these steps to print from a client Macintosh to the StylusRIP Server:

1. Make sure the StylusRIP Monitor and printer are open on your server.
2. From your client Macintosh, select PSPrinter in the Chooser.
3. On the right, next to Type, select PostScript Printer and then exit the Chooser.
4. In your application's print dialog box, select Printer as the destination when printing.

---

## ***Canceling a Print Job***

To cancel the current print job, follow one of the ways described below:

- ❑ *If the print job that you want to cancel is now spooling, press the “ ” and “.” keys on the keyboard simultaneously.*
- ❑ *If Raster Spool Mode is turned on in the Preferences dialog box, the StylusRIP MONITOR appears on screen. If the print job that you want to cancel is already spooled and is waiting to be printed, click the Job Cancel button in the center of the StylusRIP MONITOR.*



# Troubleshooting

This chapter lists possible solutions for common problems. Please refer to the troubleshooting hints before calling technical support.

When calling for technical assistance, be ready to identify your system and its configuration, the serial number of your copy of StylusRIP, and a description of the problems you are encountering.

---

### *Troubleshooting Hints*

This section includes the most common problems StylusRIP users may encounter. These problems may include several possible solutions.

#### ***An Out of Memory, Memory Low, or VM error message appears***

Install additional memory or enhance StylusRIP's performance, especially on complex jobs, by using available memory more efficiently as described below.

- ❑ Turn on Virtual Memory. From the Apple menu, select Control Panel, select Memory Control Panel, and then click the On button in the Virtual Memory panel.

- ❑ Allocate more memory to StylusRIP. Quit StylusRIP, then select the StylusRIP icon on the desktop. From the File menu, select Get Info. Increase the number in the Preferred size box relative to the amount of available memory you have. Keep in mind that the system software requires available memory in addition to other applications you may want to have active while StylusRIP is running.

### ***Font not found: using Courier; Find font errors***

- ❑ Are you allowing Font Substitution in your page setups? If so, turn Font Substitution off.
- ❑ Make sure you have PostScript-compatible printer fonts rather than just screen fonts. If you do not have PostScript-compatible printer fonts loaded on your system, you cannot print them.
- ❑ If you have renamed or moved the StylusRIP folder after the original installation, you need to reinstall the StylusRIP on the hard drive.

If the problem still persists, delete the tmp folder and the StylusRIP Preferences in the StylusRIP folder. A new preference file is automatically created when you restart StylusRIP.

### ***Images on printed pages are clipped***

- ❑ Verify the printable area of your EPSON Stylus printer and the type of paper you are using in the printer user's guide. You may need to increase your margins or decrease the size of your image.
- ❑ Make sure you selected the proper PPD in the Chooser Setup.

### *Printer out of synch - outputting repeated pages of extraneous code*

- ❑ If clicking Cancel Job has no effect, turn off your printer to avoid wasting paper.
- ❑ Force quit the StylusRIP application. Do this by holding down the option and command keys and then pressing the escape key to force quit. You must then reboot your Macintosh to reestablish communication with the printer.

### *Printer cannot be opened or printer not found*

- ❑ Make sure the printer is powered on.
- ❑ Make sure the printer is connected properly to the StylusRIP Server. Defective serial cables are a common problem. Try using Belkin serial cable F2V024-10-S.
- ❑ If you are using EPSON's optional LocalTalk or EtherTalk interface card, make sure you named the printer correctly in the Printer Setup dialog box.

### *Job in pre-print queue not printed*

- ❑ Make sure the printer is ready and the Pause light is off.
- ❑ Make sure the printer is connected properly to the Macintosh.

### *Job prints in black and white or one or more colors are missing*

- ❑ Make sure you specified color output in your application's print dialog. If you selected black ink only, color images will print in grayscale (varying shades of gray) instead of color.
- ❑ Check the color ink cartridge to see if it is empty or the print head is dirty. See your printer documentation for details on how to do this.
- ❑ Make sure you selected the correct PPD.

### *Client times out while sending job to StylusRIP*

- ❑ Did you switch to another application on the StylusRIP Server? If you did, the other application may not give StylusRIP enough time to maintain its connection with the client. Switch back to StylusRIP and try printing again.
- ❑ Is StylusRIP running on a slower Macintosh computer, and are there several clients trying to print to StylusRIP simultaneously? Your server may not be fast enough to support a large number of simultaneous transfers. Wait for some of the clients to completely send their jobs to StylusRIP, then try again.

---

# Glossary

**CPSI**

Configurable PostScript Interpreter. This Adobe Level 2 PostScript Interpreter runs on a Macintosh server rather than on a hardware peripheral device. StylusRIP uses this interpreter to render a raster image.

**FPU**

Floating Point Unit. A chip capable of executing operations with real numbers. The FPU may be built-in (MC 68040 or PPC 601) or available as an add-on to the main CPU (MC 68881).

**ICC**

International Color Consortium. A consortium of operating-system vendors that has agreed to a standard color matching system for device profiles.

**imaging device**

A device capable of printing a raster image on a physical medium, for example, a printer, imagesetter, or digital film recorder.

**interpreter**

A set of software functions that convert PostScript language commands into a raster image. StylusRIP uses the CPSI interpreter.

**LaserWriter driver**

An Apple printer driver used by an application to create a PostScript file describing the visible contents of a document.

**OPI**

Open Prepress Interface. A set of PostScript language comments for defining and specifying the placement of images.

**Post-print queue**

A list in the StylusRIP Completed Jobs window containing all jobs already printed for all open StylusRIP printers.

**PostScript**

An interpretive computer language developed by Adobe that describes the text, graphics, and image content of a document to a printer or other output device. PostScript is hardware, software, and network independent so your images always appear the way you want them to.

**Printer Connection dialog box**

A dialog box in which you select options for a StylusRIP printer.



**PSPrinter driver**

A printer driver used by an application to create a PostScript file. This driver is distributed with StylusRIP and may be installed as a substitute for a LaserWriter driver. Within this manual, all references to LaserWriter should be interpreted as references to either LaserWriter or PSPrinter.

**raster image**

A digital representation of an image, consisting of values that are assigned to, and represent, each dot in an image.

**render**

The process by which PostScript language commands are interpreted and a raster image is produced.

**RIP**

Raster Image Processor. An application or device that translates PostScript language-based data into dots that can be printed.

**StylusRIP client**

A Macintosh computer that is connected to the network and contains the StylusRIP software. Users can print from applications in a client Macintosh to printers or imaging devices connected to a StylusRIP server.

**StylusRIP server**

A Macintosh computer running the StylusRIP server application.

**TIFF**

Tagged Image File Format. A standard image file format consisting of labeled fields.

---

# *Index*

## **A**

Adobe Brilliant Screen, 2, 3-10  
AppleTalk, 2, 3-10

## **C**

Cancelling, print job, 3-12  
Client 3, 4  
Color matching, 1-8  
ColorSync, 1-8  
Connection, 3-3  
Custom intallation, 1-7

## **D**

Data size, 3-3

## **E**

EtherTalk, 2, 4

## **I**

Ink, 3-11  
Installing on  
    custom, 1-7  
    standard, 1-5-6  
    StyrusRIP, 2-1

## **J**

Job priority, 3-6

## **L**

LocalTalk, 2, 3, 4

## **M**

Message, 3-3

## **N**

Network environment, 2-4  
Network name, 3-5

## **P**

Page, 3-3  
PANTONE, 1-8  
PostScript, 1  
Preferences, 3-5  
Print job, cancelling, 3-12  
Print server, 3, 4  
Printer 3, 4, 3-3  
Progress, 3-4

## **Q**

Quality, 3-3, 3-11

## **R**

Raster spool mode, 3-6  
Remote only, 1-3

## **S**

- Screen, 3-11
- Serial cable, 3
- Server installation
  - custom, 1-7
  - standard, 1-5-6
- Standalone, 1-3
- Standard installation, 1-5-6
- Status, 3-3
- StylusRIP, installing, 2-1
- StylusRIP Monitor, 3-12
- System requirements, 1-1

## **T**

- Timeout, 3-5
- Troubleshooting, 4-1-4

<b>EPSON OVERSEAS MARKETING LOCATIONS</b>
---

---

**EPSON AMERICA, INC.**

20770 Madrona Ave.  
P.O. Box 2842  
Torrance, CA 90509-2842  
Phone: (800) 922-8911  
Fax: (310) 782-5220

**EPSON UK LTD.**

Campus 100, Maylands Avenue,  
Hemel Hempstead, Herts,  
HP2 7TJ, U.K.  
Phone: (+44) 01442 61144  
Fax: (+44) 01442 227227

---

**EPSON DEUTSCHLAND GmbH**

Zülpicher Straße 6,  
40549 Düsseldorf Germany  
Phone: (0211) 56030  
Telex: 8584786

**EPSON FRANCE S.A.**

68 bis, rue Marjolin  
92300, Levallois-Perret, France  
Phone: 33.1.40.87.37.37  
Telex: 610657

---

**EPSON AUSTRALIA PTY. LTD.**

70 GIBBES STREET, CHATSWOOD 2067 NSW.  
Phone: 2-9903-9000  
Fax: 2-9903-9177

**EPSON SINGAPORE PTE. LTD.**

No. 1 Temasek Avenue #36-00  
Millenia Tower, Singapore 039192  
Phone: (065) 33 77 911  
Fax: (065) 33 41 185

---

**EPSON HONG KONG LTD.**

Rooms 4706-10, 47/F,  
China Resources Bldg.,  
26 Harbour Road, Wanchai, Hong Kong  
Phone: 2585-4300  
Fax: 2827-7083

**EPSON TAIWAN TECHNOLOGY & TRADING LTD.**

10F, No. 287 Nanking E. Road, Sec. 3,  
Taipei, Taiwan, R.O.C.  
Phone: (02) 717-7360  
Fax: (02) 712-9164

---

**EPSON ITALIA S.p.A.**

V.le F.lli Casiraghi 427  
20099 Sesto S.Giovanni  
MI, Italy  
Phone: 2-262331  
Fax: 2-2440750

**EPSON IBERICA S.A.**

Av. de Roma, 18-26  
08290 Cerdanyola del Valles  
Barcelona, Spain  
Phone: 582. 15.00  
Fax: 582. 15.55

---

**SEIKO EPSON CORPORATION  
(Hirooka Office)**

80 Harashinden, Hirooka  
Shiojiri-shi, Nagano-ken  
399-07 Japan

**EPSON PORTUGAL, S.A.**

R. do Progresso, 471, 1º Perafita  
4460 Matosinhos, Portugal  
Phone: (02) 996 14 02  
Fax: (02) 996 14 11

**EPSON**

PostScript Level 2 Interpreter

**EPSON StylusRIP**

**User's Guide**  
**for Macintosh**

# Notice

- Stick the enclosed PostScript logo seal where it is easy to see in your printer. This seal is important if the printer ever needs repairs.
  
- Bringen Sie den beigegefügten PostScript-Logo-Aufkleber an einer gut sichtbaren Stelle am Drucker an. Dieses Siegel ist wichtig, falls der Drucker einmal repariert werden muß.
  
- Collez l'étiquette portant le logo PostScript sur un endroit visible de l'imprimante. L'étiquette est importante dans le cas où l'imprimante doit être réparée.
  
- Pegue el adhesivo con el logotipo PostScript en un lugar visible de la impresora. Este sello es importante por si en algún momento tuviera que reparar la impresora.
  
- Applicare l'adesivo con il marchio Postscript allegato in punto della stampante dove sia facile da vedere. Questo adesivo è importante in caso la stampante necessiti riparazioni.
  
- Cole o autocolante com o logótipo PostScript na impressora, num local visível. Este autocolante é importante na eventualidade da impressora necessitar de alguma reparação.



**Adobe PostScript**